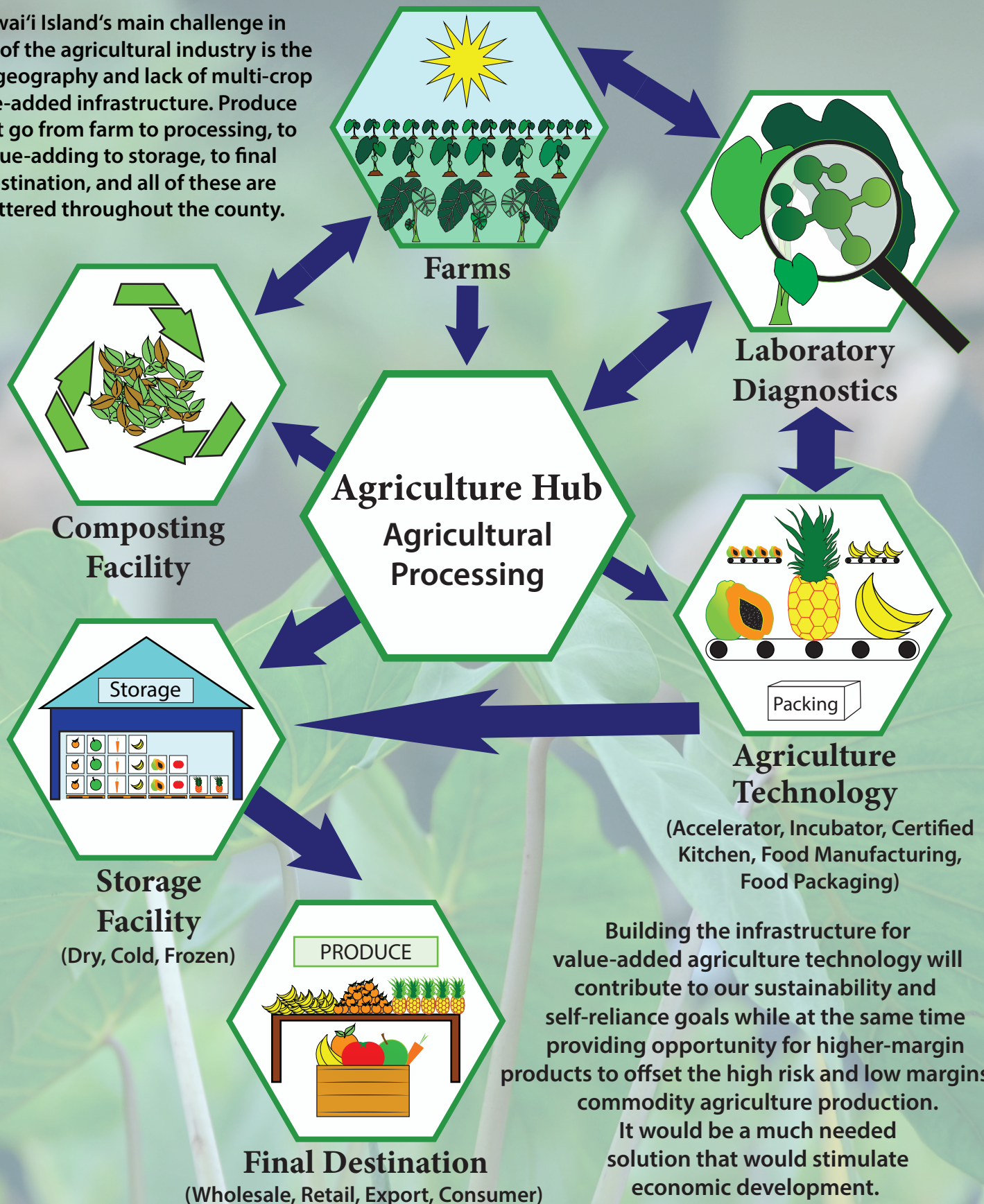


Creating a Viable Agriculture Economy

Hawai'i Island's main challenge in terms of the agricultural industry is the large geography and lack of multi-crop value-added infrastructure. Produce must go from farm to processing, to value-adding to storage, to final destination, and all of these are scattered throughout the county.



Building the infrastructure for value-added agriculture technology will contribute to our sustainability and self-reliance goals while at the same time providing opportunity for higher-margin products to offset the high risk and low margins of commodity agriculture production.

It would be a much needed solution that would stimulate economic development.